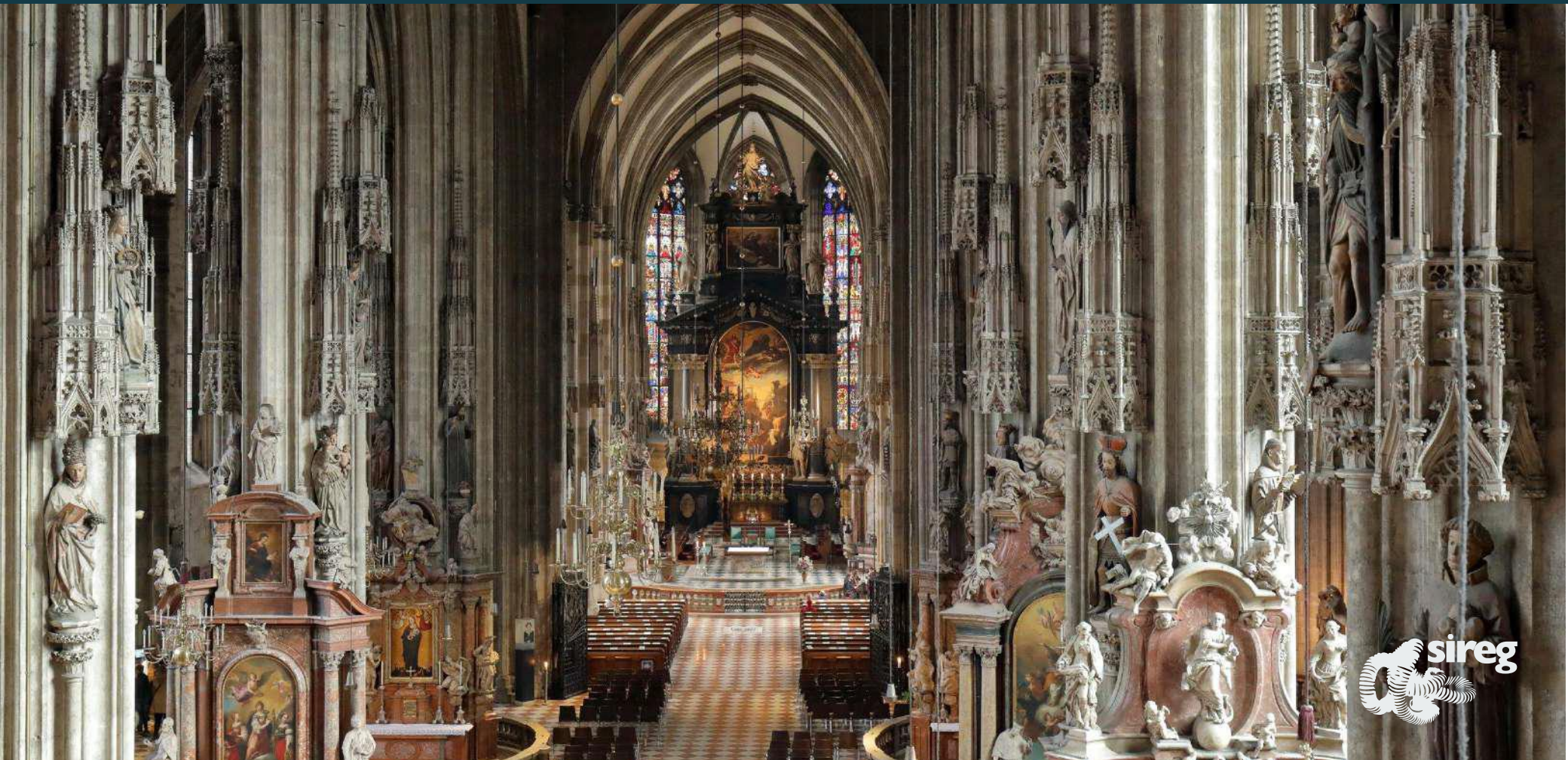


Historical Sireg

Stephansdom, Vienna, Austria

A review on world Historical Buildings and Great Civil Monuments strengthened by Sireg solutions



Historical Sireg

Stephansdom, Vienna

Stephansdome, the symbol of Vienna, was repaired using Arapree® composite round rods produced by Sireg Geotech.





Stephansdom, or St. Stephen's Cathedral, is a Gothic masterpiece in the heart of Vienna. One of the most recent restoration projects introduced the innovative use of composite rods to reinforce the cathedral's structure, including its iconic bell tower.

The works were carried out by an experienced local contractor using **Sireg Geotech's Arapree® and Glasspree® composite round rods**.

Built between the 12th and 16th centuries, the cathedral and its bell tower had suffered from weathering, natural settling, and the vibrations of its massive bells. While traditional restoration methods had been applied over time, advanced composite technology - combining aramid fiber, glass fiber, and vinyl-ester resin - offered a modern, durable solution to strengthen the structure.

Historical Sireg

Stephansdom, Vienna

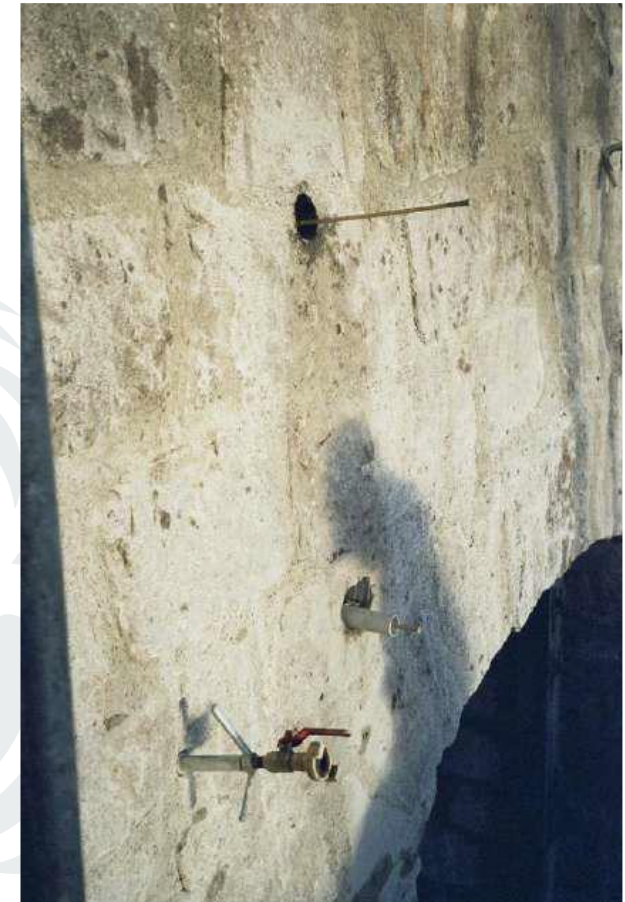
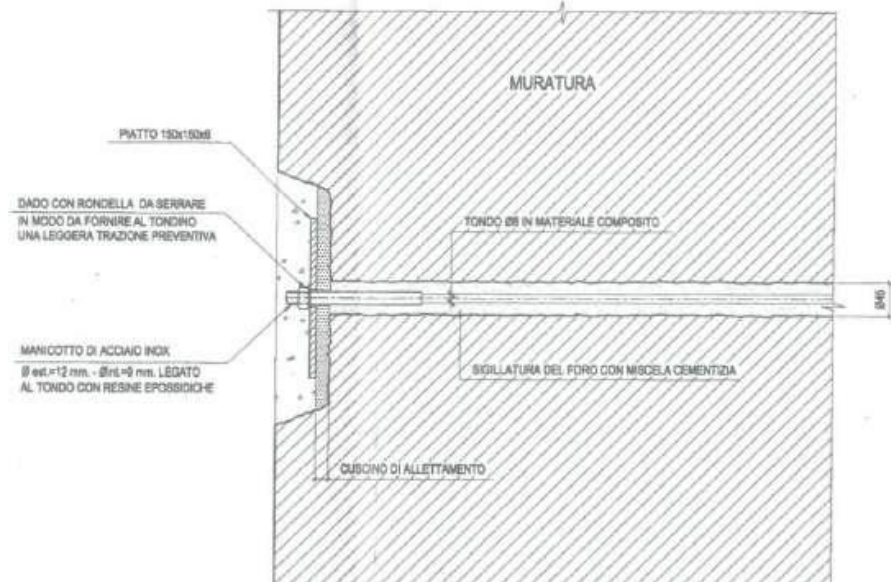
The application of composite materials into the cathedral was a delicate process involving the reinforcement of selected points.

This discreet integration allowed the historical aesthetics of the building to remain intact while providing the much-needed structural support.

The composite rods not only effectively countered the effects of aging and settling, but also contributed to distributing the weights more evenly.



Bell tower repair works, using **Arapree® 10 mm rods**, engineered blocking heads and plates. Such solutions have been developed and customized by Sireg Geotech for the project.





The restoration of Stephansdom and its bell tower using **composite rods** is a prime example of blending modern engineering with respect for historical architecture.

The project addressed immediate structural concerns while ensuring that this iconic cathedral will continue to grace Vienna's skyline for generations.

Visitors can now admire Stephansdom's grandeur, confident that this architectural treasure has been reinforced through the innovative use of composite rods, seamlessly uniting past and future.